

YSWN June/July 2024 Newsletter

Network for Change - Growth - Impact

www.yswnsa.org.za

#Issue 02

VOTING
STATION



SA NATIONAL ELECTIONS *Beyond the Ballot*

General elections were held in South Africa on 29 May 2024 to elect a new National Assembly as well as the provincial legislature in each of the nine provinces. This was the 7th general election held under the conditions of universal adult suffrage since the end of the apartheid era in 1994.



000000



South African National Elections 2024

The Social Work



yswn®

The Person in Environment

Theory:

“The person in environment, or PIE theory, is a popular social work concept that states that a person is heavily influenced by their environment; therefore, their problems and issues can be largely understood by environmental influences..”

- Mary Richmond(1917)

Social Work

Theoretical Frameworks

MMABOPELEGO
RRABOPELEGO

MAASKPLEKWEKER

SONHLALAKAHLE

SOCIAL WORKER

OSHIWAMBO- AASHUNGI MWENYO

Nontlalo'ntle

Mosebeletsi wa Sechaba

SONHLALAKAHLE

MMABOPELEGO
RRABOPELEGO

Mosebeletsi oa Sechaba

VASHANDIRI VEM. GARIRO EVANHU

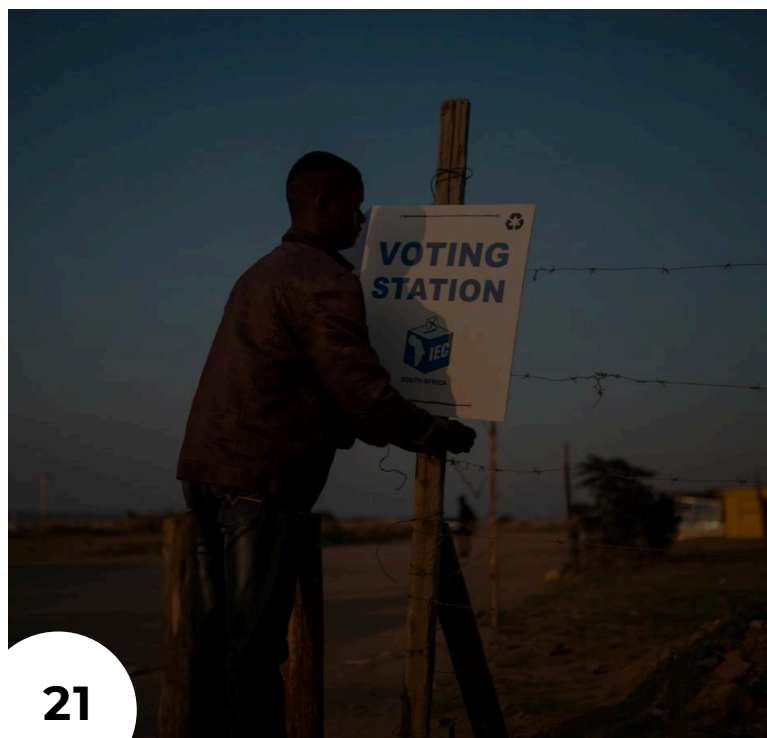
Mosebeletsi oa Sechaba

#socialworkwiki

Social Workers are World Changers!

yswn®

C o n t e n t s



21

Features Articles

- 18 Artificial Intelligence';**
Here are a few things social work students and professors should keep in mind as we navigate this new technology.
- 21 Beyond the Ballot';**
What a Social Worker Hopes to See in Government Policies.
- 26 Cyril Ramaphosa
Inaugurated as President of South Africa;**
Newly elected President Cyril Ramaphosa promises to work with all political parties and sectors to better South Africa.
- 30 Childhood Traumatic Grief';**
Cohen et al., 2002 explains Childhood Traumatic Grief as 'a condition in which trauma-related symptoms interfere with the children's ability to adequately mourn the loss of a loved one'.

38 HEART DISEASES ON THE RISE.

Deaths due to cardiovascular diseases (heart attacks and strokes) increased.

40 YSWN TRAINING & DEVELOPMENT WORKSHOP.

Young Social Workers Network, plans to expand these free training and networking sessions nationwide.



40

44 BOTSWANA & NAMIBIA OPEN BORDERS.

The Botswana-Namibia border agreement represents a significant step towards regional integration and economic co-operation within SADC.

48 YSWN TRAVEL & LEISURE MAGAZINE.

Best Holiday Resorts In South Africa, June/July 1st Edition

62 EDITOR'S BOOK REVIEW. YSWN Social Work Book Club

"Reading is essential for those who seek to rise above the ordinary"



21



Aubrey Moeketsi

Editor In Chief

@aubreymoeketsi



EDITOR'S NOTE

June Edition Issue 02

EDITORIAL NOTE



Firstly, I want to extend my heartfelt gratitude to all the social workers who attended the recent training session in Bloemfontein. This event brought together professionals from diverse sectors, including the Department of Education, Department of Social Development, Department of Health, Correctional Services, NICRO, the Military, Childline FS, FCIA, NGKA, Right to Care, FSPC EAP, UAH, the Moral Regeneration Movement from the Premier's Office, and the Guardian Angels Care and Support Organisation. Your participation underscores our collective commitment to continuous learning and collaboration.

A special thank you goes to our official partner, Liberty Life Group SA, and Metropolitan SA/Lesotho, for their unwavering support. I would also like to express my appreciation to the Department of Health FS management for their support and to Universitas Academic Hospital for graciously providing the venue for this impactful event.

I am proud to announce that we have launched our official YSWN website. While the Managing Editor mentioned this in her welcome note, I want to emphasize the personal journey behind it. Over three months, I taught myself to code through YouTube tutorials and developed our website. This endeavor was a labour of love and a testament to the multifaceted nature of social workers. It highlights our ability to achieve anything we set our minds to.

I am delighted to welcome our new contributors and thank everyone who applied to volunteer. Your willingness to share your expertise and insights makes our magazine a vibrant and valuable resource for our community. 🌍

Thank you for being part of the YSWN family.

Warm regards,

Aubrey Moeketsi

Editor in Chief,

Founder & Director at YSWN Network SA & SADC.

EDITORIAL

+27 65 911 2047 (SA)
+27 72 485 6796 (SA)
+266 5701 67 85 (Lesotho)
+267 264 8122 5518 (Namibian)
+268 7952 9089 (Swaziland)
+267 75 452 983 (Botswana)

Editor in Chief

Aubrey Moeketsi

Managing Editor:

Busisiwe Madikizela_theu

Advertising & Marketing Manager:

YSWN Team

Photographer:

YSWN Media Team

Style and Fashion Editor:

YSWN Media Team

Director of Photography

YSWN Media Team

Legal Contributor & Adviser:

Neo Phala

Editorial Team

Contacts

Editor in Chief

Aubrey Moeketsi

Aubrey@yswnsa.org.za

Managing Editor

Busisiwe Madikizela-Theu

busisiwe@yswnsa.org.za

Researcher & Contributor

Puseletso Mpeisa

Puseletso@yswnsa.org.za

Researcher & Contributor

Hawa Sankwasa

Hawa@yswnsa.org.za

Researcher & Contributor

Edward Musondo

edward@yswnsa.org.za

info@yswnsa.org.za


www.yswnsa.org.za

YSWN Press



Editorial

YSWN NEWSLETTER ISSUE 02



“The Network is not a money-making scheme, nor a popularity contest; Our lifelong existential purpose is to create a platform where we Give to the profession & our Communities more than we Receive, thus leaving a LEGACY that will out-live us and linger long after we have retired, expired or left the profession.”

- Aubrey Moeketsi



MRS. MADIKIZELA-THEU
MANAGING EDITOR

@busisiwemadikizela_theu



EDITOR'S NOTE

June Edition Issue 02

EDITOR'S NOTE

June Edition Issue 02

Welcoming Note

We are pleased to feature contributions from the SADC region, including discussions on the open borders between Namibia and Botswana. On a lighter note, our Managing Editor reviews Dr. JJ Klaas's book, "The Triangle of the One Hundred Years Wars." We also feature a new section on travel and hope that readers from all walks of life would be enticed to put away money to embark on travel around our beautiful country.

Esteemed readers, this publication is crisper and more informed, thanks to the constructive critique from you, our readers. We have listened, and we hope you enjoy reading this issue as much as we enjoyed putting it together. Our goal remains to move the social work voice into the heart of important conversations. 🌍

Thank you for your continued support.

Enjoy this month's newsletter

Sincerely,

Busisiwe Madikizela-Theu

Managing Editor,

Young Social Work Network SA Advisory Board Member

Where does one start? I suppose starting at the beginning is always best. The Young Social Workers Network (YSWN) would like to extend heartfelt thanks for the warm reception you gave our first newsletter, launched in March of this year. Your enthusiasm has fuelled our efforts, and we are excited to share that we have since launched our new interactive website <https://yswnsa.org.za>. This platform amplifies the voices of social workers not only from South Africa, the Southern African Development Community (SADC), and the African region, but also from around the globe.

We recently put out a call for volunteer freelance contributors and were thrilled to receive an overwhelming response of more than 70 applicants. After careful consideration, we selected 15 talented writers, some of whom are featured in this issue. We extend our gratitude to these new contributors and welcome them to what we hope will be a fruitful, innovative, and creative space. Our aim is to bring social work from the margins to the centre of critical conversations.

The year 2024 has been marked by election seasons in many countries, including South Africa. Our citizens went to the polls to express their desires for change in governance. Our reporters on the ground have reflected on their experiences during the election process, particularly the role of the Independent Electoral Commission (IEC) in handling the elections. We also delve into the presidential inauguration, highlighted by an intriguing governance structure known as the Government of National Unity last since heard of during the times of former president Nelson Mandela and former president FW De Klerk in the 1994 period when South Africa was thrust out of the vice grip of Apartheid. Our social work contributors offer insights on what we hope this new government will address in terms of policy development and the potential benefits for our communities.

Editorial

YSWN NEWSLETTER ISSUE 02

Quote inspired by Khalil Gibran's The Prophet on the theme of work: Analysis by Busisiwe Madikizela-Theu

"Work is love made visible. When you work, you fulfill a part of earth's furthest dream, assigned to you when that dream was born. Your work is an expression of your soul, a manifestation of your inner essence. It weaves the fabric of purpose and binds you to the greater whole. Through your labor, you shape not only your destiny but also the world's. Embrace your work with passion, for in it lies the key to a meaningful life."

- Busisiwe Madikizela-Theu



YSWN Newsletter

Contributors

SECOND EDITION

Contributors

editorial@yswnsa.org.za

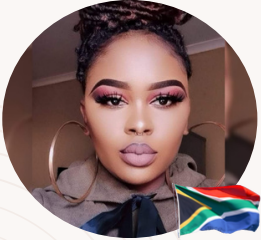
Contributors

YSWN Newsletter Issue 02



Hawa Sankwasa
Researcher & Contributor
Botswana

Hawa Sankwasa has a Bachelor's degree in Social Work from the University of Botswana. She is currently with the Ministry of Local Government and Rural Development, working under the Department of Social Development- Child Protection Services. She has experience in provision of protection and humanitarian assistance for refugees and asylum seekers as well as child protection policy, legislation and programming. Her interests are in areas of Implementation Science, Research and Policy.



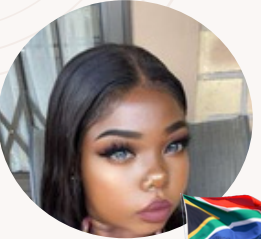
Emily Mgidi
Researcher & Contributor
SA

Emily Mgidi is a multimedia journalist who's been in the media industry for eight years. She obtained her BTECH in journalism at the Tshwane University of Technology in 2021. She started her career at the Tshwane University of Technology during her first year as a social media strategist for Qube Radio Online. She was also a writer for a local newspaper, Record Noweto, an intern journalist at Mpumalanga Press, and a blogger. She was also a journalist at Daily Sun and Scrolla Africa. She's passionate about hard news stories because she's seen how journalism has given a voice to the voiceless. She's an all-rounder, has done entertainment stories, lifestyle news, politics, Investigative stories and court stories.



Simone Christian
Researcher & Contributor
SA

Simone Christian is a master's student in Ancient Studies / Classics at the University of Stellenbosch. She has a Bachelor of Arts in Humanities and an Honours in Classics. With a background in Psychology and Social Issues, Simone is passionate about demanding attention to LGBTQIA+ individuals and the history of women in ancient times. She also has an interest in fashion and how it can be used to communicate socio-political ideas and commentary.



Ntombi Nkosi
Researcher & Contributor
SA

Ntombi Nkosi is an accomplished media professional with over 12 years of experience in multimedia politics, documentation, and editorial roles across reputable publications. Proficient in crafting and executing comprehensive media strategies, optimizing campaigns, and analyzing performance. Recognized for exceptional communication, strong networking, and adeptness in offline and digital media. An award-winning journalist with proven expertise in meeting deadlines and utilizing social media for story discovery. Committed to delivering impactful media campaigns and fostering strong industry



Edward Muzondo
Researcher & Contributor
Zimbabwe & Swaziland

Edward Muzondo's research interests lie in the area of social development, social security, and clinical social work with a specific focus on occupational social work, disability, mental health, Sexual and Reproductive Health Rights (SRHR), Drug and Substance Use. He worked on a number of projects with women who use drugs in Zimbabwe focusing more on their access to SRHR and other basic rights.



Lwazi Mavuso
Student SW & Contributor
Swaziland

Lwazi Sanele Mavuso is a final-year social work student with a passion for making a positive impact in the community. He is currently volunteering at the Umhluma Woman and Youth Foundation, where he dedicates his time to supporting and empowering women and youth. In addition to my volunteer work, I practice school social work part-time, gaining valuable experience and making a difference in the lives of students. My commitment to social work and community service reflects a deep dedication to fostering a supportive and empowering environment for all individuals.



Want to JOIN our dynamic team? Do send us an email and share with us your previous work and on...
Email our Manager...



Commem

Happy Ju



oration

une 16

2024



Top place to
**work &
bank**



Africanbank has been
certified as a **Top Employer**
for the **3rd year** running.





**Earn
points
simply for
swiping**

Ts & Cs apply.

LADY SOCIAL WORKER

Court Fashion Sense



Court Appearance Wear
WINTER EDITION



Kelso melton blazer 34931201 - R599.99
Kelso cropped melton trench coat 34912901
- R599.99
Kelso houndstooth coat 34912601 - R799.99
Kelso utility coat 34913001 - R899.99

SHOP NOW

EDGARS

Online shopping:
www.edgars.co.za

Court Appearance Wear
WINTER EDITION

We do not own any material, photoshoots, clothing wear, or any content presented in our YSWN Court Fashion guide. Our intention through this section is to inspire Social Workers appearing in Court to dress professionally. Our overall purpose is to bring back esteem and respect in the Social Work profession.

Echoes of Democracy

Reflections on Voting Day in South Africa

By Simone Christian

Voting Day has come and gone, marking another chapter in the story of our rainbow nation. From suburban Benoni to urban Constantia, citizens of all walks of

life gathered at polling stations, their journeys weaving tales of civic duty and community spirit.

Amidst the queues—some long enough to spark impromptu neighborhood gatherings—new connections were forged. Young adults, freshly minted with the right to vote, buzzed with anticipation, eager to leave their mark on the nation's future.

In the bustling student town where I found myself, the atmosphere was electric. Despite logistical challenges and the discomfort of impractical footwear, we stood united in our commitment to democracy

Amidst the scent of coffee and the pulsing beats of Amapiano, conversations sparked, echoing sentiments of pride and purpose.

I found myself inadvertently drawn into a poignant exchange. A fellow voter, reflecting on his family's legacy of struggle and triumph, spoke words heavy with history. "My mother stood in this line in 1994. And her mother before her. They stood for change," he mused, his voice resonating with a deep sense of heritage and responsibility.

His words struck a chord. We straightened our weary backs, our momentary discomfort trivial in the face of the sacrifices that had paved the way for this privilege. Here, in this line, we-

Visit our Website

www.yswnsa.org.za | editorial@yswnsa.org.za

#OPINION PIECE

-carried the weight of our collective past, our voices echoing with hope and determination.

As the day drew to a close and results began to trickle in, we paused to reflect. Beyond the numbers and political fervor, Voting Day had been a testament to resilience and unity. We honored the generations before us, knowing that their struggles had not been in vain.

May we continue to honor their legacy with every election, ensuring that their courage and conviction endure in the choices we make for our nation's future. 🌍

Simone Christian

Visit our Website

www.yswnsa.org.za | editorial@yswnsa.org.za

ARTIFICIAL INTELLIGENCE

And Social Work Education

Artificial Intelligence &
Social Work Education

BY KAREN MAGRUDER

Karen Magruder, LCSW-S, is an assistant professor of practice at the University of Texas at Arlington School of Social Work and a doctoral (DSW) student at the University of Kentucky. She also manages a free social work education resources YouTube channel and a private practice providing therapy, clinical supervision, and tutoring for the Association of Social Work Boards licensing exams.

By now, you have probably heard the buzz about the newly released artificial intelligence (AI) chatbot called ChatGPT, an online marvel that can instantly write poetry, crack jokes, and even spit out cohesive essays on virtually any topic. With more than one hundred million active users inundating the servers to capacity, ChatGPT is the fastest growing computer application in history. Anyone with an email address can sign up to use this free tool as its designers test functionality. While Google or other search engines point searchers to relevant sources, ChatGPT combines a number of inputs to give one (often very detailed) answer. With the stroke of a keyboard, ChatGPT can provide users with comprehensive and succinct information addressing innumerable social work-related prompts, such as:

- *Explain the biopsychosocial perspective.*
- *What is the difference between cognitive behavioral therapy and dialectical behavior therapy?*
- *Give some examples of nonpharmacological interventions to reduce wandering for an individual with dementia.*
- *Explain the difference between equality and equity in terms that a child would understand.*

The development of AI has been described as the fourth industrial revolution. AI chatbots are increasingly popular, with use in industries such as health care, online banking, and e-commerce already adopting them widely. We are even in the initial stages of seeing AI integrated into search engines, such as Bing, with mixed results. While social workers do not traditionally receive training on AI for use in education or practice settings, the rapid advancement of this technology will undoubtedly shape the social environment in which we operate. AI already has been used by social workers in the field to successfully address social issues such as HIV awareness among homeless youth, improving access to sexual health resources, assessing risk of child maltreatment, and predicting intimate partner violence. In the higher education world, ChatGPT and related AI technologies hold promise as new tools to engage social work students and expand access to clear and easily digestible information. But what are the risks?

Here are a few things social work students and professors should keep in mind as we navigate this new technology.

Potential for Misinformation

There have been widespread concerns that AI-generated responses, which may sound plausible and convincing, could, in fact, contain incorrect or misleading information. Furthermore, outputs may not accurately reflect the most current data; ChatGPT's knowledge cutoff is 2021, for instance. In fact, OpenAI (the website that hosts ChatGPT) has posted the following disclaimer to new ChatGPT users: "While we have safeguards in place, the system may occasionally generate incorrect or misleading information and produce offensive or biased content. It is not intended to give advice. ChatGPT does not cite its sources. Thus, social work educators have a responsibility to warn students about the limitations of trusting AI-chatbot-generated "answers." Likewise, students should adopt a critical lens when utilizing AI platforms to seek information and always cross-reference this information with reputable and empirical sources.

Impediments to Critical Thinking

Let's say, just for argument's sake, that ChatGPT is all-knowing and accurate. Another issue remains: How will easy access to such cogent "spoon fed" answers influence students' ability to critically examine literature and effectively synthesize this information independently? ChatGPT, by its nature, is not capable of generating original ideas. Will relying on this inherently unoriginal tool for such convincing responses (say, to online discussion board prompts) limit students' aptitude for producing original thoughts? Could the allure of an "easy out" to critical thinking cause these skills to atrophy in the long term? Conversely, will AI be the new calculator—a useful, commonplace, and trusted tool that helps generate answers more efficiently, freeing our time to think critically in other ways?

Academic Integrity

Essay responses generated by AI have been described as "frighteningly good," with early reports of ChatGPT successfully writing a convincing five-paragraph essay on Wuthering Heights for a high school English class.⁹ Additionally, the dialoguing nature of ChatGPT allows the user to ask follow-up questions and direct modifications to an answer, with the AI "remembering" the whole conversation. This means that students would have the ability to easily modify an AI-generated response. For instance, the user could ask the program to modify the word count of a response or include certain key words. ChatGPT also allows users to command it to "try again," resulting in a newly worded response. This means it's nearly impossible for educators to check what the "ChatGPT answer" is to any given prompt—there's a seemingly infinite array of answers even to the same question. Although using ChatGPT responses as a starting point for their own writing could be appropriate, students will undoubtedly push the envelope, attempting to pass AI-generated writing as their own original work. While early models are emerging to detect whether written text was human-written or AI-generated, these capabilities are unlikely to be fully integrated into commonly used existing plagiarism-tracking tools such as Turnitin or Unicheck any time soon.

Accessibility

ChatGPT is still in its early testing stages, receiving external feedback from users to improve system quality and safety. As subscription models are already emerging, to what extent will this technology continue to be free and open for public use indefinitely? Envisioning a world where institutions and students must pay to access such tools raises issues of equality and access. Beyond financial affordability, we must also consider the extent to which AI platforms will be accessible to individuals with disabilities. For example, how do screen readers and voice-to-text tools fare with these chat-style interfaces?



ChatGPT

Artificial Intelligence AND Social Work

EDUCATION

AI & Social Work Education

Educating Social Work Students for a Post-AI World

The NASW Code of Ethics implores social workers to “critically examine and keep current with emerging knowledge relevant to social work.” Social work educators have a responsibility to stay up to date with emerging AI technology, and not only because of its many implications in the classroom; social work students must also be prepared to use AI in the field in an ethical and effective manner. For example, how will big data and machine learning affect client privacy and confidentiality, particularly in telehealth settings? For what policies related to AI should social workers advocate? Can we leverage AI to streamline administrative tasks, thus freeing time for more direct client services? What opportunities exist for interdisciplinary collaboration to address social issues using AI technology? How will social workers respond to meet social services needs if widespread adoption of AI leads to unemployment in sectors such as journalism, marketing, and graphic design? Might social work jobs themselves be displaced as the landscape of mental health care continues to evolve, with programs like WoeBot becoming increasingly sophisticated? Or will a revolution in AI-based telehealth expand access to mental health resources in underserved populations?

Educating Social Work Students for a Post-AI World

Social workers should be cautious about adopting either a utopian or apocalyptic view of an AI-rich future, but rather realistically consider how this technology can be responsibly harnessed to elevate higher education learning and ultimately maximize social good in the field. We have an opportunity as social workers to research the social impacts of AI. As the world increasingly leverages AI to solve complex social problems, social workers must remain at the forefront. To make that a reality, today's social work educators must be ready to maximize the benefits and mitigate the drawbacks to its use in the classroom. 🌐

About the Author:

Karen Magruder, LCSW-S, is an assistant professor of practice at the University of Texas at Arlington School of Social Work and a doctoral (DSW) student at the University of Kentucky. She also manages a free social work education resources YouTube channel and a private practice providing therapy, clinical supervision, and tutoring for the Association of Social Work Boards licensing exams.



“THAT’S A DUMB IDEA”

That ‘dumb idea’ has helped a continent of young girls feel like they belong.

Khulile Vilakazi-Ofosu | Sibahle Doll Collection

Do what others say you can't with the bank that believes you can.
Start, manage and grow your business at [standardbank.co.za/RiseAboveTheNoise](https://www.standardbank.co.za/RiseAboveTheNoise)



SA NATIONAL ELECTIONS

Beyond the Ballot

WHAT A SOCIAL WORKER HOPES TO SEE IN GOVERNMENT POLICIES

By Lwazi Mavuso
& Edward Muszondo



SA NATIONAL ELECTIONS

Beyond the Ballot

WHAT A SOCIAL WORKER HOPES TO SEE IN GOVERNMENT POLICIES

As professional social workers looking through the lens of political change, the incoming government bears a critical responsibility, namely;

To address the needs of the most vulnerable in society. Vulnerable populations encompass children, the elderly, individuals with disabilities, people experiencing homelessness, victims of abuse, and marginalized communities. This article outlines essential policies and psychosocial interventions that a new government should implement. These suggestions aim to be innovative, offering fresh perspectives that go beyond conventional approaches.

Holistic and Inclusive Social Welfare Policies, Integrated Social Protection Systems

Instead of fragmented welfare programs, the government should develop an integrated social protection system. This system would consolidate various forms of assistance—such as housing, food security, healthcare, and income support—into a single, streamlined service. This approach ensures that individuals receive comprehensive support without navigating multiple bureaucratic channels (Esping-Andersen, 1990).

Guaranteed Minimum Income (GMI)

A GMI ensures that all citizens, regardless of their employment status, receive a baseline income to cover essential living costs. This policy can reduce poverty, decrease economic inequality, and provide a safety net during economic downturns or personal crises (Standing, 2017).

Visit our Website

www.yswnsa.org.za | editorial@yswnsa.org.za

Accessible and Comprehensive Healthcare

Mobile Health Units

To address healthcare disparities in rural and underserved urban areas, the government should establish mobile health units. These units can provide primary healthcare services, vaccinations, mental health support, and health education directly to communities with limited access to healthcare facilities (Barr, 2016).

Telehealth Expansion

Expanding telehealth services can bridge gaps for those unable to visit healthcare facilities due to distance, mobility issues, or social stigma. Telehealth can provide consultations, mental health therapy, and follow-up care, making healthcare more accessible and efficient (Patel, 2018).

Education and Employment Support

Universal Pre-K and Childcare

Investing in universal pre-kindergarten and affordable childcare ensures that all children, regardless of their socio-economic background, receive early education. Early childhood education is critical for cognitive and social development and can have long-lasting benefits on academic and career outcomes (Heckman, 2006).

Job Guarantee Programs

The government should implement job readiness & guarantee programs that provide employment opportunities for all citizens willing and able to work. These programs can focus on public works, green energy projects, and social services, ensuring meaningful employment that benefits society (OECD, 2019).

Psychosocial Interventions

Community Resilience Programs

Establish community resilience programs focusing on building strong, supportive networks within communities. These programs can include training for community leaders, creating local support groups, and developing community-led initiatives that promote social cohesion and mutual aid (Berkman & Glass, 2000).

Integrated Social Protection Systems

Develop public spaces and community centers designed with trauma-informed principles. These spaces should offer a safe and supportive environment for individuals to access services, participate in community activities, and receive psychosocial support (Fallot & Harris, 2009).

Innovative Mental Health Services

Expand mental health services beyond traditional therapy and medication. This can include initiatives like peer support programs, art and music therapy, outdoor therapy, and mindfulness-based stress reduction programs. These innovative approaches can make mental health care more appealing and accessible to diverse populations (Marlatt & Witkiewitz, 2010).

Social Justice and Anti-Discrimination Measures

Inclusive Policy-Making

Ensure that policy-making processes are inclusive and participatory. Actively seek input from vulnerable and marginalized communities to ensure their voices are heard and considered in decision-making. Policies should aim to address systemic inequalities and promote social justice (Dominelli, 2002).

Restorative Justice Practices

Implement restorative justice practices within the criminal justice system and community conflict resolution. Restorative justice focuses on repairing harm, promoting reconciliation, and reintegrating individuals into the community. This approach can reduce recidivism and foster a more compassionate and supportive society (Zehr, 2002).

Universal Accessibility Standards

Develop and enforce universal accessibility standards for all public and private spaces. This includes physical accessibility for individuals with disabilities, as well as ensuring that information and services are accessible to people with sensory impairments and cognitive disabilities (Pager & Shepherd, 2008).

Education and Employment Support

Youth Empowerment Programs

Establish programs that empower youth from vulnerable backgrounds. These programs can provide mentorship, leadership training, vocational skills, and opportunities for civic engagement. Empowering youth ensures they have the tools and confidence to contribute positively to society (UNESCO, 2015).

Job Guarantee Programs

The government should implement job guarantee programs that provide employment opportunities for all citizens willing and able to work. These programs can focus on public works, green energy projects, and social services, ensuring meaningful employment that benefits society (OECD, 2019).

Universal Accessibility Standards

To address the needs of the most vulnerable in society. Vulnerable populations encompass children, the elderly, individuals with disabilities, people experiencing homelessness, victims of abuse, and marginalized communities. This article outlines essential policies and psychosocial interventions that a new government should implement. These suggestions aim to be innovative, offering fresh perspectives that go beyond conventional approaches.

Holistic and Inclusive Social Welfare Policies

Integrated Social Protection Systems

Instead of fragmented welfare programs, the government should develop an integrated social protection system. This system would consolidate various forms of assistance—such as housing, food security, healthcare, and income support—into a single, streamlined service. This approach ensures that individuals receive comprehensive support without navigating multiple bureaucratic channels (Esping-Andersen, 1990).

Article Authors:The Article is written by Lwazi Mavuso, revised by Edward Muszondo

About the Author

Edward Muzondo's research interests lie in the area of social development, social security, and clinical social work with a specific focus in occupational social work, disability, mental health, Sexual and Reproductive Health Rights (SRHR), Drug and Substance Use. He worked on a number of projects with women who use drugs in Zimbabwe focusing more on their access to SRHR and other basic rights.

About the Author

Lwazi Sanele Mavuso, is a final-year social work student with a passion for making a positive impact in the community. Currently, He volunteers at the Umhluma Woman and Youth Foundation, where he dedicates his time to supporting and empowering women and youth. In addition to his volunteer work, Lwazi practices school social work part-time, gaining valuable experience and making a difference in the lives of students. His commitment to social work and community service reflects a deep dedication to fostering a supportive and empowering environment for all individuals.

Beyond The Ballot

YSWN PRESS

Visit our Website

www.yswnsa.org.za | editorial@yswnsa.org.za

Sources:

1. Barr, D. A. (2016). *Introduction to US Health Policy: The Organization, Financing, and Delivery of Health Care in America*. Johns Hopkins University Press.
2. Berkman, L. F., & Glass, T. (2000). *Social integration, social networks, social support, and health*. In *Social Epidemiology* (pp. 137-173). Oxford University Press.
3. Desmond, M. (2016). *Evicted: Poverty and Profit in the American City*. Crown.
4. Esping-Andersen, G. (1990). *The Three Worlds of Welfare Capitalism*. Princeton University Press.
5. Fallot, R. D., & Harris, M. (2009). *Creating Cultures of Trauma-Informed Care (CCTIC): A Self-Assessment and Planning Protocol*. Community Connections.
6. Heckman, J. J. (2006). *Skill formation and the economics of investing in disadvantaged children*. *Science*, 312(5782), 1900-1902.
7. Marlatt, G. A., & Witkiewitz, K. (2010). *Update on harm-reduction policy and intervention research*. *Annual Review of Clinical Psychology*, 6, 591-606.
8. OECD. (2019). *Getting Skills Right: Engaging low-skilled adults in learning*. OECD Publishing.
9. Pager, D., & Shepherd, H. (2008). *The sociology of discrimination: Racial discrimination in employment, housing, credit, and consumer markets*. *Annual Review of Sociology*, 34, 181-209.
10. Patel, V., Saxena, S., Lund, C., Thornicroft, G., Baingana, F., Bolton, P., ... & Unützer, J. (2018). *The Lancet Commission on global mental health and sustainable development*. *The Lancet*, 392(10157), 1553-1598.
11. Roberts, A. R., & Ottens, A. J. (2005). *The seven-stage crisis intervention model: A road map to goal attainment, problem-solving, and crisis resolution*. *Brief Treatment and Crisis Intervention*, 5(4), 329-339.
12. Standing, G. (2017). *Basic Income: And How We Can Make It Happen*. Penguin.
13. UNESCO. (2015). *Education for All 2000-2015: Achievements and Challenges*.



Want to Write for us?

YSWN editorial team consists of social work writers, researchers, aspiring writers; Journalism students & graduates; Social commentators, and published authors.

Join our editorial team

To all academic social work scholars, researchers, and writers, do send us your articles and opinion pieces to reach a larger audience in Africa and internationally.

Send our Manager & Editorial team an email on:

busisiwe@yswnsa.org.za
editorial@yswnsa.org.za
aubrey@yswnsa.org.za

YSWN PRESS

Visit our Website

www.yswnsa.org.za | editorial@yswnsa.org.za



Cyril Ramaphosa Inaugurated as President of South Africa

By Ntombi NKOSI

Hundreds of South Africans descended to the Union Building in Pretoria to attend a spectacular Presidential Inauguration event where President Cyril Ramaphosa was sworn in for the second term.

Security was heightened and law enforcement agencies left no space for mistakes in meeting the safety of all who attended the event. Chief Justice Raymond Zondo conducted the swearing-in of Ramaphosa in the Union Building' Nelson Mandela Amphitheatre.

The theme for the occasion was *"30 Years of Democracy, Partnership and Growth"*.

The ceremony was witnessed by South Africans from all walks of life, international guests, South African royalty, representatives of political parties, leaders of organized labor, business and civil society organizations, religious leaders and South Africans based abroad via livestreams.

Attendees included representatives of regional, continental, and international organizations and bodies such as the Southern African Development Community (SADC), the African Union (AU) and the United Nations (UN).

Countries that were represented at a higher level at the Inauguration included the Kingdom of eSwatini, Kingdom of Lesotho, the Republics of Zimbabwe, Mozambique, Namibia, Angola, and Tanzania; the Republic of Uganda; the People's Republic of China; the Arab Republic and Egypt; the State of Palestine and the Republic of Cuba. They were dressed to the nines in suits and designer dresses, one could have easily mistaken dignitaries as fashion models. Ordinary citizens also in attendance experienced the event from the south lawns of the Union Building, they were treated to live performances by fine artists such as Lebo Sekgoela, Vicky Simpson. Young and old people danced, shared laughter and waved their South African flags in jubilation.

Cyril Ramaphosa inaugurated as President of South Africa

ARTICLE - POLITICS

June is also Pride month, so amongst the crowd was a group called Thato Ome Group Family LGBTQI+ from Tembisa;

"We are excited to witness President Ramaphosa being inaugurated in our lifetime, we do have faith that he will take South Africa to higher heights and work for a better life for all including us the LGBTQI+ community," said leader of the group Makhosazana Buthelezi.

During the formal proceedings, the South African National Defence Force (SANDF) performed the ceremonial elements of the Inauguration as a demonstration of allegiance to the Republic and the Commander-In-Chief.

The ceremonial elements included a 21-gun salute, a salute flight by the South African Air Force (SAAF), -



Newly elected President President Cyril Ramaphosa promises to work with all political parties and sectors to better South Africa.

-Inspection of a South African National Defence Force (SANDF) Battalion, a Battalion march past, and mass fly past. In his address as the new president, Ramaphosa warned against those who continue to create divisions in South Africa: *"Those who seek to inflame tensions in our country will not succeed because South Africans are resolute. Those who seek to undermine our institutions will fail because the-*



-south african democracy lives in the hearts of all our people and shall never be dislodged, Nothing will distract us from serving the people," said Ramaphosa.

The 2024 South African general elections saw No political party emerging with an outright majority. The African National Congress (ANC), left with no choice - resorted to inviting all political parties to form part of the Government of National Unity (GNU).

Parties that welcomed the invitation included the Democratic Alliance (DA), Inkatha Freedom Party (IFP), Patriotic Alliance (PA), United Democratic Movement (UDM), and the VF+. Political parties such as Economic Freedom Fighters (EFF) and uMkhonto we Sizwe Party (MKP) snubbed the invitation labeling it as a *"matrimonial grand coalition"* between the ANC and DA.

Ramaphosa admitted that a lot of work still needs to be done ahead of the 7th Administration as the country remains deeply unequal, where the rich are getting richer and the poor becoming poorer.

"As the president of the country, I will work with any political party and sector that is willing to contribute to a better South Africa," Ramaphosa said.

After delivering his speech, Ramaphosa was honored in a flypast, where pilots in different aircraft flew over the Union Buildings, to the delight of those in attendance.

The concept of Government of National Unity is not a new form of government in SA. Post-Apartheid South Africa saw the formation of a government of national unity between the then National Party, now known as the Democratic Alliance Party, the IFP, and the ANC, where the father of the nation, Mr Nelson Mandela, was elected new President of a new and free South Africa. Time will tell if the GNU will live up to the expectations of the ordinary South Africans who've until now, gotten the short end of the stick of this democracy.🌍

YSWN PRESS



YSWN Travel & leisure!

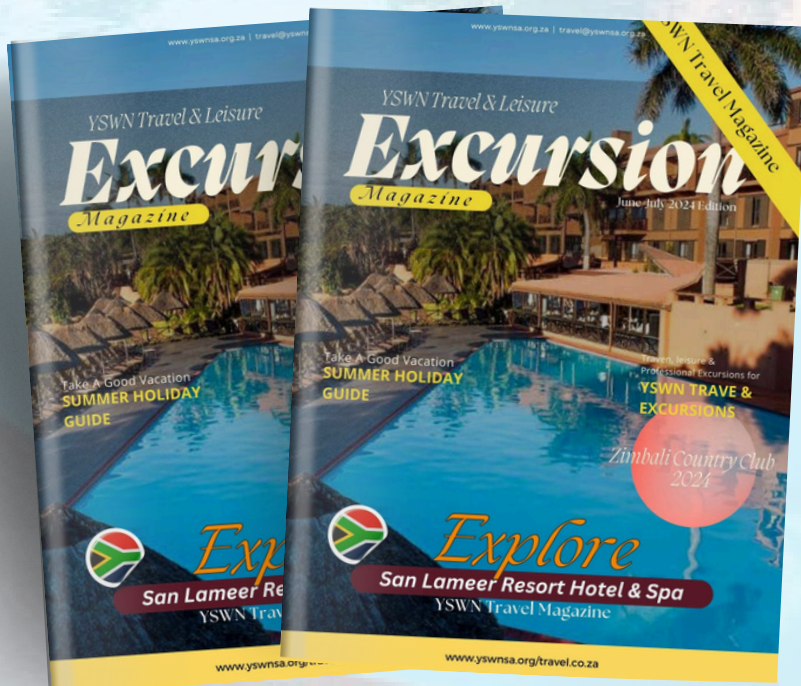
EXCURSION *Magazine*

48

YSWN TRAVEL & LEISURE

Tourism Guide

Page 40



CHILDHOOD

Traumatic Grief

Death in The Family

Childhood Traumatic Grief:
Clinical Social Work Article Written by Aubrey Moeketsi

BY AUBREY MOEKETSI

Aubrey Moeketsi is a qualified Social Worker with a special interest in Clinical Social Work. He is a graduate of the University of Free State. Aubrey is currently working for the Department of Social Development as a social worker.

He's also an Editor-in-chief for the YSWN Newsletter and The Social Worker Magazine online publications.

Aubrey Moeketsi is a Clinical Depression & Trauma survivor.

AM is a Founder & Director at YSWN SADC.

South Africa, rightly so, just declared Child Protection Week a 365 days a year child protection campaign and called upon all spheres of government and community organizations to heed the call to work together to address and raise awareness around issues affecting children's daily lives. This ofcause is welcomed, especially because protecting children shouldn't be reduced to a mere 7 days of social media and community hype, This move is also important primarily because statistically speaking; a significantly higher number of children around the world are reported to be exposed daily to traumatic life-altering experiences.

In South Africa, empirical studies indicate that more than two-thirds of children across all races and socio-economic backgrounds report experiencing a traumatic event before the age of 16. Take the Optimus Study on Child Abuse, Violence, and Neglect in South Africa for example. The study discovered that 42% of South Africa's children experienced some form of ill-treatment, while 82% have either experienced or witnessed some form of victimization (Optmius Study, 2015, p.11).

Cohen et al., 2002 explains Childhood Traumatic Grief as 'a condition in which trauma-related symptoms interferes with the children's ability to adequately mourn the loss of a loved one'.

It means that a normal grieving episode will be disrupted by traumatic symptoms associated with PTSD or shock as a result of loss.

As social workers in the behavioral space, we need to realize that real change starts when we're cognizant of the fact that statistical figures and data refer to literal children and not just numbers. If for example we say, 42% of children in SA experience ill-treatment, 42% is actually almost half of the South African children; think of that for a moment, almost half of our children in SA are experiencing ill-treatment or some form of victimization, that's an unacceptable statistic. Think about that next time when you see or deal with statistics; *it's not numbers, it's people.*

Children Do Grieve Too

When death hits the family, and an attachment figure suddenly dies, everybody in the household is usually given a fair chance to mourn; this of course is both necessary and therapeutic. However, the mistake that most parents and families make in times of death in the family is to ignore the feelings and emotions of children in the household. This belief may be due to:

- *The general assumption is that children are not affected by death in the same way it affects adults.*
- *People erroneously believe that the Age of the Child somehow 'protects' children from grief, loss, and trauma.*

Conversely, some people believe that children cannot be diagnosed with PTSD as they are still young and therefore oblivious to what is currently happening in the household. All this is not scientifically based and is, at worst, expressively incorrect and can be very harmful to children in the long run.

Theoretically sound Social Workers will remember that a Systemic Perspective on Loss and Trauma taught us that children, just like adults, do grieve as well (Bowens, 1978), and also, according to the DSM-5, it is possible to diagnose Post-Traumatic Stress Disorder (PTSD) in children.

What exactly is Childhood Traumatic Grief?

Grief is a natural process that follows a period of loss or a painful experience, like when you lose your pet, an attachment figure, a job, etc. Grief in and of itself is not a pathological condition, hence when people are grieving, we need to give them adequate time to do so with no expected time limit. My fourth-year Loss and Trauma Professor used to

-say that *'The prescription to grief is grieving'*. Grieving is therefore an important and therapeutic process during death and dying in the family. Grief is only pathological when it turns traumatic, and the trauma lingers long and remains unaddressed.

Cohen et al., 2002 explain Childhood Traumatic Grief as a *'condition in which trauma-related symptoms interferes with the children's ability to adequately mourn the loss of a loved one'*. This means that a normal grieving episode will be disrupted by traumatic symptoms associated with PTSD or shock as a result of loss.

To fully understand the subject of Childhood Traumatic Grief, terms such as **bereavement**, **grief**, **DSM-5**, and **PTSD** must be taken into consideration:

- **Grief & Bereavement:**

The word 'grieve' refers to a Psychological Reaction to bereavement. Bereavement is a state of loss or a period. It involves emotions, thoughts, and feelings towards a stressor or grief-inducing event such as experiencing loss - death and dying.

In lay terms, grief is when people are in mourning, heartbroken, or devastated because of a stressor/death, etc. This implies that grief is as psychological as it is emotional.

- **DSM-5 and PTSD:**

Both these abbreviations clinical concepts; DSM-5 stands for Diagnostic and Statistical Manual of Mental Health Disorders (**DSM-5**).

In lay terms; DSM-5 is the clinical categorization of mental health disorders and associated symptoms, while PTSD stands for Posttraumatic Stress Disorder. Think of PTSD as the -



Childhood Traumatic Grief

Childhood Traumatic Grief

- 'after-effects' of something terrible or painful happening in your life such as your parent or beloved sibling suddenly dying, and the 'after effects' that has on your mind.

Childhood Ego-Centrism: *Children are very Ego-Centric.*

Children are very much egotistical; they usually see and can only think of the world from their point of view. They cannot put themselves in other people's shoes as yet nor can they reason beyond their own viewpoints. Childhood egocentrism also means that children have a much greater sense of guilt & shame, and as such, they tend to blame themselves more often when negative things happen in the house; When death hits the family, and an important attachment figure suddenly dies, children can experience a greater sense of guilt and self-blame, especially if they feel that they were 'naughty'; they might think to themselves that *"it's because I was a bad child, and mommy said bad things happen to bad children, hence daddy or grandma died, Its because I was naughty."*

In cases where an attachment figure died while they were in school, some children may tend to hate school, and not do well academically, not because of regression, but because in their minds, it was while they were at school that Granma/daddy died and they couldn't help, *"if I was not at school, she would still be alive today"*, and so, most tend to resent school.

Death and Permanency: *Irreversibility of Death*

In addition to being egotistical, children also do not understand the Irreversibility of Death; this implies that they do not understand how it is that Grandma/Daddy who was here with us yesterday can never be with us ever again. Their Ego does not allow them to think or imagine a world where their attachment figure is not with them anymore.

It's important to note that children have no prior frame of reference as it relates to death and dying. Perhaps what makes death and dying more confusing and traumatic to children is that this is in fact the first-

-time most children experience this process called death, it's the first time in their young life that they get acquainted with this terrible experience called 'ceasing to exist'; They don't know what that is, they cannot comprehend it, it's a totally new and foreign concept to their young minds, and if we are not careful as parents and guardians, this episode in their lives may be the beginning of a protracted battle with trust and attachment issues, especially if there is no prior debriefing session.

Grief as a Pathway to Occultism

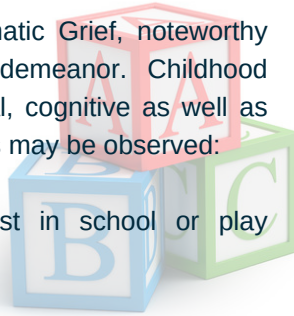
I remember seeing a YouTube video while I was still doing my undergraduate studies at the University of the Free State six years ago about a 12-year-old boy from Jamaica who joined the occult because He never dealt with the passing of his father.

This boy joined the occult hoping to be reunited with his father who was rumoured to be still alive somewhere under the sea in Jamaica. Such, unfortunately, is sometimes the case with most children around the world who usually turn to occultism to deal with the pain and trauma associated losing significant attachment figures in their lives, especially if the person dead was their everything. Child debriefing sessions are very important to prevent such from happening to our children.

How to know when your child is battling Childhood Traumatic Grief: *Signs of Childhood Traumatic Grief in Children.*

For many children battling Childhood Traumatic Grief, noteworthy changes will be evident in their overall demeanor. Childhood Traumatic Grief impacts the child's emotional, cognitive as well as physiological persona, the following symptoms may be observed:

- **Loss of Interest:** A diminished interest in school or play activities they previously enjoyed.
- **Cognitive Challenges:** Poor academic performance in school.
- **Separation Anxiety:** All of a sudden, a child may no longer want to separate from family members in the house fearing that death or a 'ghost' may come and take from her surviving members of the family.
- **Lack of Impulse Control:** Most children battling CTG have trouble regulating emotions, they are mostly aggressive and display uncontrollable tantrums.



About the Author:

Aubrey Moeketsi is a qualified Social Worker with a special interest in Clinical Social Work. He is a graduate of the University of Free State. Aubrey is currently working for the Department of Social Development as a social worker. He's also an Editor-in-chief for the YSWN Newsletter and The Social Worker Magazine online publications. Aubrey Moeketsi is a Clinical Depression & Trauma survivor.

AM is a Founder & Director at YSWN SADC.

Children are Resilient

It's noteworthy to point out that grief, in and of itself is not a problem. Grief is the natural 'next stage' that comes after experiencing loss. All humans (and even animals) do grieve when experiencing painful episodes of loss, grief is the natural progression from experiencing pain and shock. As my then fourth year Loss and Trauma Professor, Prof Sandra Ferreira would usually say; "*The prescription to grief is grieving, therefore Grieve*". Grieving therefore is the most therapeutic thing you can do for yourself. Grieving is good for your overall mental and emotional health.

The problem is when grief starts to interfere with one's ability to mourn adequately, this is when it becomes Traumatic Grief and therefore necessitates immediate grief and trauma therapy, especially for our children.🌍

Theoretically sound Social Workers will remember that a Systemic Perspective on Loss and Trauma taught us that children, just like adults, do grieve as well (Bowens, 1979), also, according to the DSM-5, it is possible to diagnose Post-Traumatic Stress Disorder (PTSD) in children.

-Aubrey Moeketsi

References:

1. Bowen M., "Family Reaction to Death" in, *Family Therapy in Clinical Practice* (New York: Aronson, 1978)
2. Burton P, Ward CL, Artz L & Leoschut L (2015) *The Optimus study on child abuse, violence and neglect in South Africa*. Cape Town: Centre for Justice and Crime Prevention.
3. Cohen, J. A., Mannarino, A. P., Greenberg, T., Padlo, S., & Shipley, C. (2002). *Childhood traumatic grief*. *Trauma, Violence, & Abuse*, 3(4), 307–327. <https://doi.org/10.1177/1524838002237332>

YSWN PRESS



THE SOCIAL WORKER MAN
Court Fashion 
Sense

Jet Men's Tan Melton Coat

Jet **R 499.99**
Or 6 payments of R 83.33 at 0%
interest.

Stay cozy and stylish in the Jet Tan Melton Coat. Made with high-quality polyester and Melton materials, this coat is perfect for chilly weather. With a timeless design and comfortable fit, it's a versatile addition to any wardrobe.

Court Appearance Wear
WINTER EDITION



We do not own any material, photoshoots, clothing wea, or any content presented in our YSWN Court Fashion guide. Our intention through this section is to inspire Social Workers appearing in Court to dress professionally. Our overall purpose is to bring back esteem and respect in the Social Work profession.



R 499.99
Or 6 payments of R 83.33 at 0%
interest.

Court Appearance Wear
WINTER EDITION

WORLD-CLASS EVENT

BEYOND THE BALLOT

In essence, the 2024 elections have not only reinforced our commitment to free and fair processes but have also underscored the resilience and unity of the South African people in shaping their collective destiny.



Caption for the Image: President Cyril Ramaphosa at the IEC Results Operating Centre in Midrand.

"Despite operational and technological challenges, Election 2024 stands as a credible record of our nation's political will," Mamabolo affirmed. He highlighted the overwhelming satisfaction reported by voters in the Human Sciences Research Council's Election Satisfaction Survey, which underscored high levels of trust in the IEC and positive evaluations of voting station officials

Mamabolo credited the 16.2 million voters whose participation affirmed South Africa's commitment to democracy. "Your act of civic engagement will shape our nation's future," he asserted.

In his closing remarks, President Ramaphosa commended South Africans for their dedication to a better country. Addressing incoming lawmakers, he urged humility and service, reminding them of their accountability to the people.

Acknowledging the IEC's efforts amidst challenging circumstances, Ramaphosa extended gratitude to law enforcement, media, and all involved parties. "The people of South Africa have once again upheld the values of our democracy," he concluded.

In essence, the 2024 elections have not only reinforced our commitment to free and fair processes but have also underscored the resilience and unity of the South African people in shaping their collective destiny. 🌐

HEART D

On th

IN SOUT

Deaths due to chronic medical conditions including cardiovascular, cancer, diabetes and chronic lower respiratory diseases have increased 58.7% over 20 years, Stats SA says.

In a report released on Tuesday, the agency said these chronic conditions, referred to as non-communicable diseases (NCDs), require targeted interventions to ease the burden on health systems.

Factors such as urbanisation, sedentary lifestyles, unhealthy dietary habits such as too much salt, high sugar intake and fatty foods, inadequate intake of fibre, fruit and vegetables, tobacco use and rising obesity rates have contributed to this upsurge, according to World Health Organisation research. Detection, screening and treatment of NCDs are key components of the response to this health challenge.

Looking at data between 1997 and 2018, Stats SA said the median age of death was 65 for males and 69 for females.

Deaths due to cardiovascular diseases (heart attacks and strokes) increased steadily between 2008 to 2018, accounting for 12.9% in 2008, and increasing to 17.6% in 2018. Black Africans had the highest age-standardised mortality rates at 203.46 per 100,000, followed by Indian/Asian and coloured population groups, at 170.63 and 168.23 per 100,000 respectively.



CARDIOVASCULAR DISEASES ON THE RISE IN SOUTH AFRICA

CARDIOVASCULAR DISEASES

The white population group had the lowest age-standardised mortality rates overall, at 111.14 per 100,000 in 2018. A leading risk factor for cardiovascular diseases is hypertension, or high blood pressure. It is reported that South Africa has one of the highest levels of overweight and obesity in the world, which is a contributing factor for heart disease.

DISEASES

The Rise

IN SOUTH AFRICA



ON THE RISE IN SOUTH AFRICA

The number of deaths due to diabetes increased by 36.5% in the period. In 2018, the age-standardised mortality rate for diabetes was 62.86 deaths per 100,000 midyear population. The Indian/Asian population group had the highest, while the white-

-population group had the lowest. The coloured and black African population groups had lower but increasing age-standardised mortality rates than the Indian/Asian population group.

Chronic lower respiratory diseases accounted for 2.4% of all causes of mortality in 2008, and their contribution increased to 3% in 2018. Chronic obstructive pulmonary diseases accounted for the majority at 62%, followed by asthma at 22.3% and status asthmaticus at 5.4%. Males accounted for the majority of deaths at 60.2%. Contributing factors include smoking, TB and exposure to indoor smoke from solid fuels.

Efforts to tackle NCDs have evolved, with a notable shift towards preventive strategies, Stats SA said.

“Health education campaigns, policy interventions and public health initiatives focusing on promoting a healthier lifestyle, early detection and regular health check-ups have shown promise in curbing the spread and impact of NCDs.

“Regular screening for NCDs at health facilities needs to be reinforced to ensure timely diagnosis and monitoring of patients to ensure that they are under control.”

The South African National Strategic Plan for the Prevention and Control of Non-Communicable Diseases, 2022–2027, aims to strengthen health systems to accelerate the prevention and control of these chronic conditions. 🌐

Article Source: https://www.timeslive.co.za/news/south-africa/2023-10-17-our-lifestyles-are-increasingly-killing-us-says-stats-sa-report/#google_vignette



YSWN

Training & Development

Upcoming Workshop

YSWN Training & Development

For Upcoming CPD Training & Networking Workshops, Check our Website for updates.

info@yswnsa.org.za

www.yswnsa.org.za



Past Event Photos

Did you get snapped at our last event? Check out the photos below and also our social media to see if you were snapped!



@yswnsa



Young Social Workers Network, in partnership with Liberty Life Insurance recently concluded a highly successful Training and Development workshop for social workers in Free State, South Africa. This event marked the-

-beginning of a nationwide initiative aimed at providing free training and networking opportunities to enhance the skills and professional development of social workers across the country. This event marked the beginning of a nationwide initiative aimed at providing free training and networking opportunities to enhance the skills and professional development of social workers across the country.

The training session, held in Free State, South Africa, was designed to address key challenges and opportunities in the field of social work. Participants had the opportunity to engage in interactive workshops, informative seminars, and networking sessions facilitated by experienced professionals and experts in various aspects of social work.

KEY HIGHLIGHTS

- **Diverse Topics Covered:** Workshops and seminars covered a wide range of topics including trauma-informed care, advocacy strategies, ethical considerations in social work, and community engagement techniques.
- **Interactive Sessions:** Participants engaged in hands-on activities, case studies, and role-playing exercises designed to simulate real-world social work scenarios.
- **Expert Insights:** Renowned speakers and professionals from the field shared their expertise and insights, providing valuable perspectives and guidance to attendees.

9th
MAY 2024

ONE DAY FREE Training & Networking Session For:

- Social Workers in Health, Education, DSDI
- Social Workers from local NGO's & Private Sector
- Zang-Bloemfontein, Botshabelo and Thabanchu
- Stakeholders are also welcomed to RSVP & Attend

#LaunchWillBeServed

NEW AMENDMENTS
In the Children's Act 38 of 2005

WHAT SOCIAL WORKERS NEED TO KNOW **9th** MAY 2024

VENUE TO BE ANNOUNCED SOON

MS. ZOLA CHONCO
Social Worker
Facilitator
YSWN President Gauteng

MS. NKHENSANI SHIBAMBU
Trainer
DSD National
Policy Development

MR. THUTO MADUENYANE
Trainer
The Financial Specialist
Liberty Life

ABOUT THIS PROGRAM

The Department of Social Development National, in partnership with Liberty Life and Young Social Workers Network SA, is facilitating capacitation training and Networking session on the New Amendments on Children's Act 38 of 2005.

DISCUSSION & INSIGHT

- New Amendments
- Understanding Welfare Law
- Policy Development processes
- Financial Literacy for Social Workers
- Professional Networking

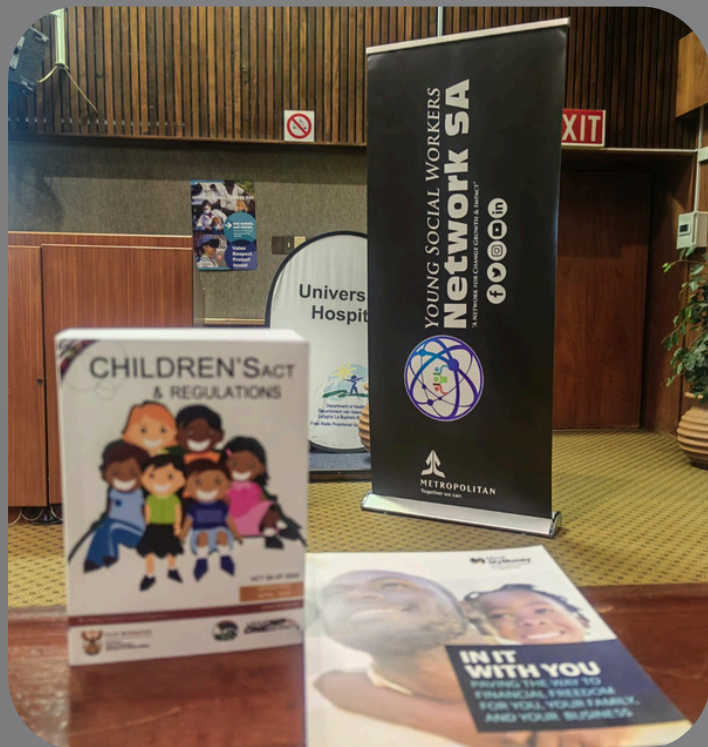
TRAINING@YSWNSA.ORG.ZA - WWW.YSWNSA.ORG.ZA
RSVP@YSWNSA.ORG.ZA • +276 5911 2047

ORGANISED BY NETWORK SA POWERED BY LIBERTY

- **Networking Opportunities:** Networking sessions allowed participants to connect with peers, share experiences, and build relationships that can support ongoing professional development.

FUTURE WORKSHOPS

Encouraged by the success in Free State, South Africa, the Young Social Workers Network, plans to expand these free training and networking sessions nationwide. The goal is to reach social workers in all provinces, ensuring equitable access to professional development opportunities that can ultimately enhance social work practice and improve outcomes for communities across South Africa.



www.yswnsa.org.za



YSWN WORKSHOPS OBJECTIVES

1. Skill Enhancement: Provide participants with practical skills and knowledge essential for effective social work practice.
2. Professional Development: Foster a supportive environment for continuous learning and growth within the social work community.
3. Networking: Facilitate connections among social workers to promote collaboration and knowledge sharing.
4. Community Impact: Equip social workers with tools and strategies to better serve their communities and address local needs. 🌍



Young Social Workers Network, recently concluded a highly successful Training and Development event for social workers in Free State, South Africa. Attendees seated at the recent workshop



YSWN PRESS

Article Written By Hawa Sankwasa, a qualified Social Worker and a member of Young Social Workers Network Botswana



YOUNG SOCIAL WORKERS Network Int

Network for Change Growth & Impact



Social Workers are World Changers!

yswn®



Welcome to the Young Social Workers Network SA, your premier Academic and Professional Network for Social Workers in South Africa. We are a voluntary professional network committed to inclusivity and progress, we are a non-racial, non-discriminatory, non-ageist organization dedicated to fostering Change, Growth, and Impact within the field of Social Work. Join us in shaping a brighter future for our communities.

Our History

The Young Social Workers Network (YSWN) originated as an idea in 2018 and came to fruition with its official launch on May 5th, 2023, in Bloemfontein, Free State, South Africa. This milestone was achieved in collaboration with the Social Work Department at the University of the Free State (SA), marking the beginning of our journey to empower and unite social workers across the nation.



The network is currently on an expansion phase, launching chapters nationwide as well as within the southern African SADC Communities.

The South African Chapter, YSWN SA, is the foundational launching pad for all YSWN Chapters in SADC.

We pride ourselves in facilitating platforms where social workers in Africa can participate in international social work, transforming African communities through social work theoretical frameworks, more specifically, afro-centric social work theoretical practices.

Finally, our Network is taking new members both in South Africa and within SADC, interested professionals can contact us via email expressing their desire to join the network.

www.yswnsa.org.za

The South African Advisory Board Members are;

Mrs. Makgosto Mbuyisa (*Chief Director, DSD*), Ms. Nkhensani Shibambu (*DSD National, Policy Development*), Professor Roelf Reyneke (*Professor, University of Free State*), Ms. Bukelwa Qwelane (*Senior Director at Education FS*), Mr. Gustav Wilson, Chief Director DSD), Mrs Busisiwe Madikizela-Theu a Phd Candidate, & Editor. Professor Annelise Keet (*HOD at Nelson Mandela University*).



THE NETWORK'S TEN (10) PILLARS ARE

- We are an interest group for Social Service Professionals within the SADC.
- We are a professional and academic body that exists to help facilitate growth platforms for Social Workers in SADC.
- The Creation & Facilitation of Continuous Professional Development (CPD) training for Social Workers. SADC
- Facilitating platforms where senior social workers can serve as mentors for younger Social Workers in the field within the network.
- Creating multidisciplinary partnerships with professionals from other fields in SADC.
- Conducting and facilitating our own Organizational Research Projects in our sphere of practice.
- Creating stakeholder partnerships with all Universities that offer Social Work as a major in Africa.
- Engagement in SADC large-scale Psychosocial Community Development programs to empower our communities.
- Supporting Student Social workers by incorporating them within the structures of the Network.
- Provide a platform where we support professional Social Work Authors, Researchers, as well as Entrepreneurial Social Workers in their respective fields of practice.

If you want to join a chapter in your province or country; Log in to our Website download the membership form, fill it and email it back to us; membership@yswnsa.org.za

YOUNG SOCIAL WORKERS NETWORK HAS A PRESENCE & FOOTPRINT ALL OVER SADC.

WE CATER FOR:

- YOUNG PROFESSIONALS WHO JUST ENTERED THE FIELD OF SOCIAL WORK,
- EXPERIENCED SOCIAL WORKERS WITH LONG SERVICE IN PRACTICE.
- STUDENT SOCIAL WORKERS (FROM 1ST YEAR - FINAL YEARS)
- AT OUR ADVISORY LEVEL, WE HAVE UNIVERSITY PROFESSORS, LECTURERS, SOCIAL RESEARCHERS, AND PHD SCHOLARS WITHIN THE FIELD OF SOCIAL WORK.

YswN NETWORK CHAPTERS;

WE HAVE;

- REGIONAL,
- PROVINCIAL,
- NATIONAL AND,
- SADC YswN CHAPTERS.

OUR HIERARCHY:

- YswN PROFESSIONALS CHAPTERS.
- YswN ADVISORY BOARD MEMBERSHIP.
- YswN STUDENT CHAPTERS.
- FRIENDS OF THE NETWORK GLOBAL.

TO JOIN YswN AT ANY LEVEL

SEND US AN EMAIL:

MEMBERSHIP@YswNSA.ORG.ZA
INFO@YswNSA.ORG.ZA

VISIT OUR WEBSITE

WWW.YswNSA.ORG.ZA

YOUNG SOCIAL WORKERS NETWORK SA

www.yswnsa.org.za

YswN Press

www.yswnsa.org.za | info@yswnsa.org.za

SADC NEWS



BOTSWANA & NAMIBIA
OPEN BORDERS, PASSPORT
ABOLITION

BOTSWANA & NAMIBIA OPEN BORDERS, PASSPORT ABOLITION

**BY HAWA
SANKWASA**

Hawa Sankwasa has a Bachelor's degree in Social Work from the University of Botswana.

She is currently with the Ministry of Local Government and Rural Development, working under the Department of Social Development-

Child Protection Services. She has experience in provision of protection and humanitarian assistance for refugees and asylum seekers as well as child protection policy, legislation and programming. Her interests are in areas of Implementation Science, Research and Policy.

In a landmark move, Namibia and Botswana have agreed to allow unrestricted travel between their borders, marking a significant milestone in regional integration within the Southern African Development Community (SADC). This initiative not only promotes closer ties between the two nations but also unlocks vast socioeconomic opportunities through enhanced cross-border trade and collaboration.

Policy Implementation and Impact

Under this agreement, residents of Namibia and Botswana can cross the border with just their national identity cards, eliminating the need for passports. While routine immigration controls remain in place, the streamlined process at border points—supported by five recognized crossing stations along the 1,500-kilometer border—facilitates smoother movement. The bilateral agreement aligns with the SADC Protocol on the Facilitation of Movement of Persons, adopted in 2005. This protocol aims -

-to harmonize laws and administrative procedures across member states, allowing citizens to travel within the region for up to 90 days annually without a visa. Standardizing immigration forms and establishing dedicated SADC desks at ports of entry further support efficient travel procedures (SADC, 2005). It also aligns with the Africa Continental Free Trade Agreement (AfCFTA) which is a landmark trade agreement aimed at creating a single market for goods and services across the African continent whose benefits are expected to boost intra-African trade, enhance economic diversification, attract foreign investment, create jobs, and ultimately contribute to sustainable economic development and poverty reduction across Africa. This Namibia and Botswana commit to unrestricted travel promises to move us as the SADC region closer to the aims of (AfCFTA)

Challenges and Opportunities for Social Work Practice

While the agreement promises numerous benefits, including enhanced cross-cultural understanding and scientific collaboration, it also presents challenges that social work must address. Social workers play a pivotal role in advocating for migrant rights, promoting community engagement, and ensuring inclusive policies that accommodate the needs of diverse populations.

The integration of migrant populations into Botswana society requires proactive measures to mitigate tensions and promote social cohesion. Social workers engage in intercultural dialogue, facilitate access to services, and challenge discriminatory practices to foster an inclusive environment for all residents, regardless of nationality.

The Botswana-Namibia border agreement represents a significant step towards regional integration and economic cooperation within SADC. While its full impact remains to be seen, the initiative sets a precedent for other member states and underscores the potential of free movement policies to drive socioeconomic development and cross-border collaboration in Africa.



As social work adapts to the evolving needs of mobile populations and advocates for inclusive policies, it stands poised to contribute meaningfully to the success of such agreements. By promoting social justice, community resilience, and equitable access to services, social workers play a crucial role in building a cohesive and prosperous future for Botswana, Namibia, and the entire SADC region.

REFERENCES

- <https://futuremedia.com.na/namibia-botswana-and-beyond-assessing-free-movement-economic-benefits-challenges/>
- <https://www.amnesty.org/en/latest/news/2023/02/botswana-namibia-accord-on-free-movement-between-countries/>
- <https://neweralive.na/posts/opinion-economic-benefits-challenges-of-free-movement> <https://theconversation.com/free-movement-of-people-across-africa-regions-are-showing-how-it-can-work-197199>

YSWN PRESS



Thandiswa Mazwai

Continues to Brace Mzansi with

Eargasmic Music

FANS ARE MESMERIZED BY HER LATEST ALBUM TILTED SANKOFA

By Emily Mgidi

The music icon released her album earlier this year, on the 10th of May and like her previous timeless music, it sparked musical conversation between South Africa, West Africa and different religious groups. Thandiswa explained that this album was very personal to her. "I never write personal albums or songs. It's always about women or society but I needed to, this time," she said.

During her album launch in carnival city, she explained that Sankofa is a Twi word from the Akan people of Ghana. She said it means to go back and fetch what has been left behind. "In our journeys, we may lose our sense of self, our history, our will to fight. We may lose language or ways of being," she said.

"Sankofa invites us to go back and fetch what has been lost so that we can return whole," she added. This resonated with a lot of people and it appears to be a very personal album to many.

"I was born in the year of the youth uprising and so my birth is tainted with struggle and revolution," said Thandiswa.

She said in the journey of her recording this album, she discovered a common sonic language that rests in the archive, the modern and the futuristic.



Fans are mesmerized by her latest album tilted Sankofa. The legend is known for her unique, timeless songs that never disappoint and this time was no exception.

She also expressed that one of her favorite quotes of love is that "no revolution exists without love".

Most importantly, she loves to put love in everything that she does. The music icon is embarking on a three-city tour after the release of her album. Sankofa Tour performance commenced on the 11th of May at Carnival City in Johannesburg, where the album was launched, followed by Durban Playhouse on the 31st of May, before concluding at the Artscape in Cape Town on the 20th of July. She said the tour also include songs from Mazwai's iconic debut solo album Zabalaza. 🌍

YSWN PRESS

THANDISWA
THE SANKOFA TOUR

20 JULY, 2024
ARTSCAPE
CAPE TOWN

TICKETS FROM R350

30 YEARS
ARTSCAPE
web tickets
AVAILABLE AT [Click n Buy](#)

YSWN Travel & Leisure

Excursion

Magazine

June/July 2024 Edition

#Issue 1

Take A Good Vacation
**SUMMER HOLIDAY
GUIDE**

Traven, leisure &
Professional Excursions for
**YSWN TRAVE &
EXCURSIONS**

*Zimbali Country Club
2024*

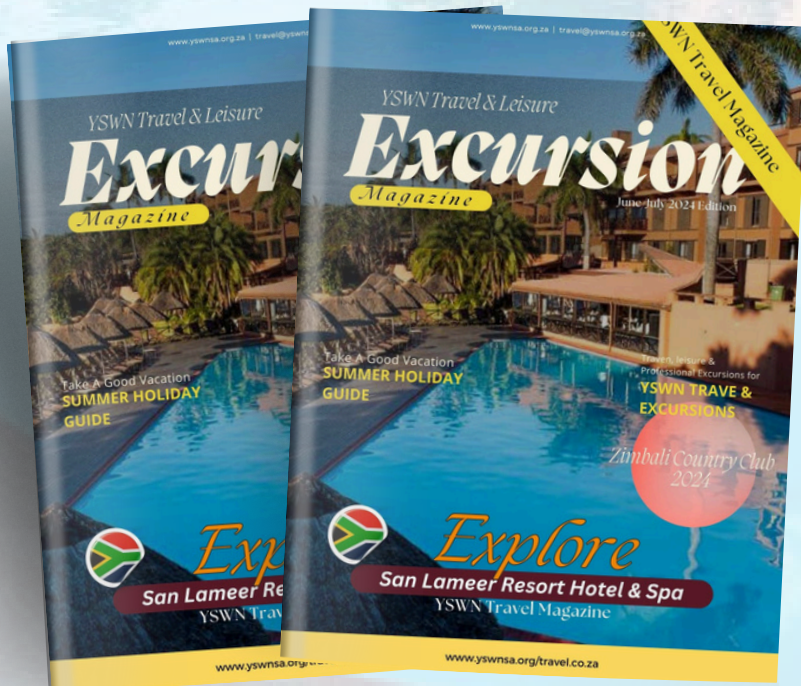


Explore

San Lameer Resort Hotel & Spa

YSWN Travel Magazine

YSWN Travel & leisure
EXCURSION
Magazine





a holiday magazine that contains dozens of very interesting tourist destinations for you to visit on holidays or weekends with your family

TRAVEL



a holiday magazine that contains dozens of very interesting tourist destinations for you to visit on holidays or weekends with your family

Discover Best Holiday Resorts In South Africa June/July 2024 Edition



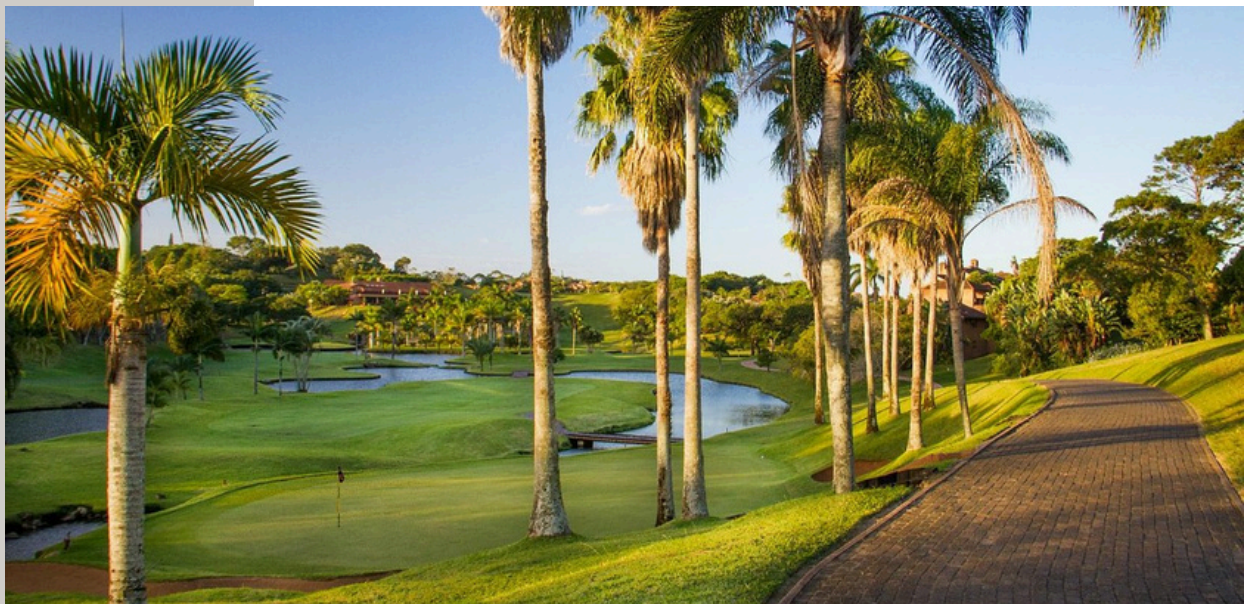
YSWN Travel & leisure

EXCURSION *Magazine*

1. SAN LAMEER | SOUTH COAST



Main Road, San Lameer Southbroom, Kwa-Zulu Natal,
South Africa; +27(0)39 313 0011
sanlameerhotel.com



#YSWN Travel Magazine

Explore

San Lameer Resort Hotel & Spa

Whether it's the championship golf course here, complete with zebra roaming the fairway fringes, the pristine lagoon stretching into the very heart of the resort, or expansive Blue Flag beaches, at San Lameer you're guaranteed a prime holiday resort experience in one of South Africa's most sought after sub-tropical settings. Holidaymakers at San Lameer can choose from villa rentals or hotel stays, and with daily flights to Durban from most cities, San Lameer is accessible no matter where you are in South Africa.

The intimate hotel offers 40 rooms and suites, elegantly decorated in a modern, fresh coastal style. In this exclusive and secure beach and golf coastal reserve, guests are surrounded by beauty, luxury and tranquility. The centrepiece of San Lameer's magnificent domain is the 18-hole championship golf course. For the non-Golfer there are a myriad of facilities and activities on the estate to keep you occupied, not least of all the award winning Lagoon Spa. 🌊



San Lameer | South Coast



ZIMBALI

YSWN Travel Magazine

PERIODIC YSWN TRAVEL & LEIZURE PUBLICATION

www.zimbali.com

ZIMBALI COUNTRY CLUB

ZIMBALI ESTATE IS A NATURAL AND CONTEMPORARY COASTAL FOREST ESTATE

BASKING IN THE ZIMBALI SUN

YSWN TRAVEL

The Zimbali Country Club is the perfect tranquil setting for a special event of any kind. Bathed in natural light with magnificent views of the golf course and wooded forest, the venue options at Zimbali Country Club suit large, traditional weddings, small and intimate family celebrations, as well as business functions and social gatherings.

Whether you're looking for an elegant wedding ceremony set in the forest, an intimate business boardroom function, or a grand social event, both indoor and outdoor event locations are available to members, and so are a variety of food and banqueting options





A PERFECT SUMMER GETAWAY

HAVING FAMILY FUN UNDER THE SUN



MANGWANANI SIGNATURE SPA

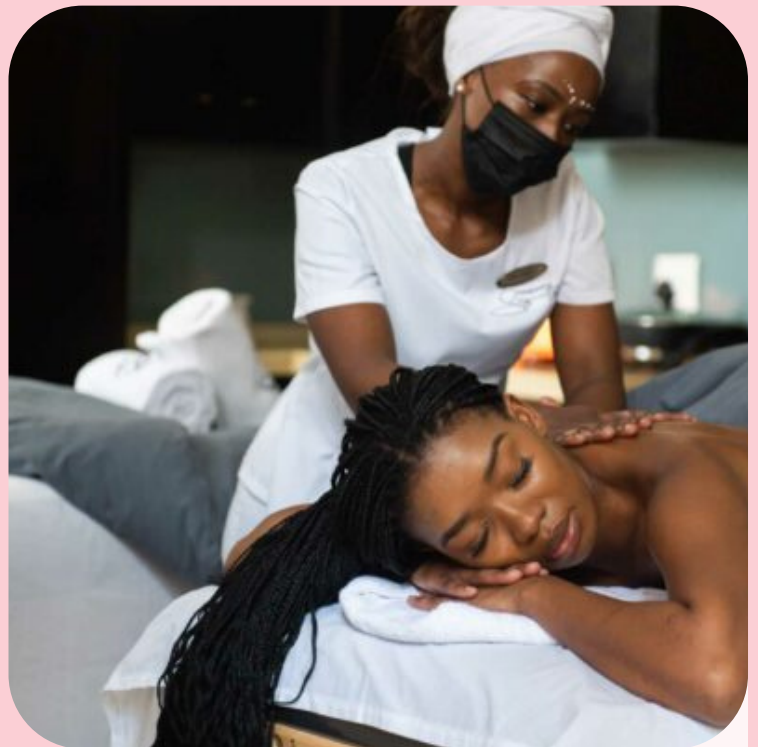
YSWN TRAVEL

The Spa treatment menu includes a selection of beauty enhancing, anti-aging and relaxation facial therapies, full body treatments for tranquility and relaxation, slimming, detox or hydrating African rituals customised to suite your individual requirements. Their team is on hand to ensure that your spa journey is a memorable and magical experience.

This brand new Signature spa is unique to Zimbali Estate and the latest resort style offering from the Mangwanani group. A first of it's kind with a majorly renovated spa and pool facility. A fusion of African wellness, ultimate relaxation and exclusive indulgence.

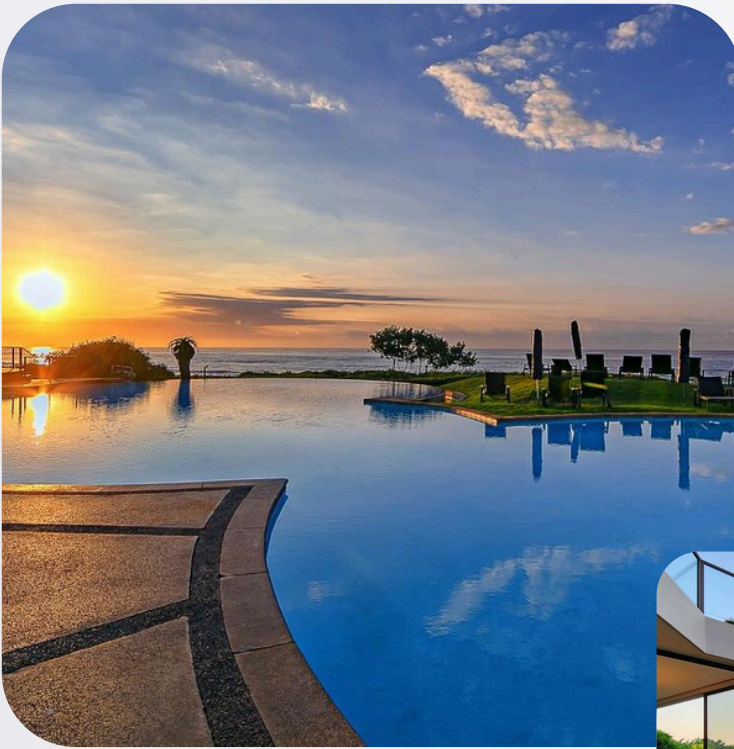
ZIMBALI BEACH

The perfect location can transform a special event into an extraordinary occasion. Choosing sun-kissed water, the soothing sounds of ocean waves, stunning vistas and fresh sea air as the setting for your wedding, wedding anniversary or other family celebration, can turn your day into a simply beautiful and unforgettable event. And that's what Zimbali Beach really offers...a unique and authentic experience, creating wonderful memories with those you love.





ZIMBALI



BASKING IN THE ZIMBALI SUN

YSWN Travel

VALLEY OF THE POOLS

The Valley of the Pools is the perfect place for all seasons, swimmers, nature seekers, and sun lovers. It's where families find their spot – whether it is taking in the beautiful sea view while immersed in the cool water of the rim flow pool, sun worshipping from the relaxed comfort of the poolside recliners, whale watching from the top deck of the VOP restaurant or enjoying a delicious daily special under the trees below.

This happy, sometimes tranquil spot has amazing panoramic views overlooking the Indian Ocean,

ZIMBALI LODGE

With leaning palms, subtropical gardens and a classy resort-style, Zimbali Lodge is the place to sit back and let nature soothe your soul. Here, the atmosphere is warm and soulful

Tucked deep in the natural coastal forest, Zimbali Country Club is built around the remains of a ruined farmhouse, enveloped by the roots of a beautiful ageing wild fig tree. The luxury contemporary clubhouse is the gathering place for golfers and families of Zimbali Estate to unwind and reconnect at the many social events held here. Sitting on the outdoor deck, members can soak up golf course vistas through the dappled evening forest light, after a great (or gruelling!) game of golf. It is the perfect spot for all Zimbali Country Club members and their families to spend time cooling down or catching up. ☺

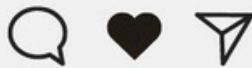


yswnsa



TRAVEL

Magazine



www.yswnsa.org/travel.co.za
TRAVEL

A top-down view of a white bowl filled with a thick, reddish-brown soup. A gold spoon rests on the left side of the bowl. In the bottom right corner, a portion of a dark wine bottle is visible, with a white label featuring a gold lion crest and the text 'SIMONSIG'. The background is a plain, light-colored surface.

FRESH

MOROCCAN-STYLE

CHICKEN & APRICOT

SOUP

+ SIMONSIG

CHARDONNAY



WOOLWORTHS

woolworths.co.za

REACH MORE WITH US

If you want to use our platform to promote your **products** and **platforms**, or you would like for us to **profile** you and **your business**, do contact our Marketing Department:

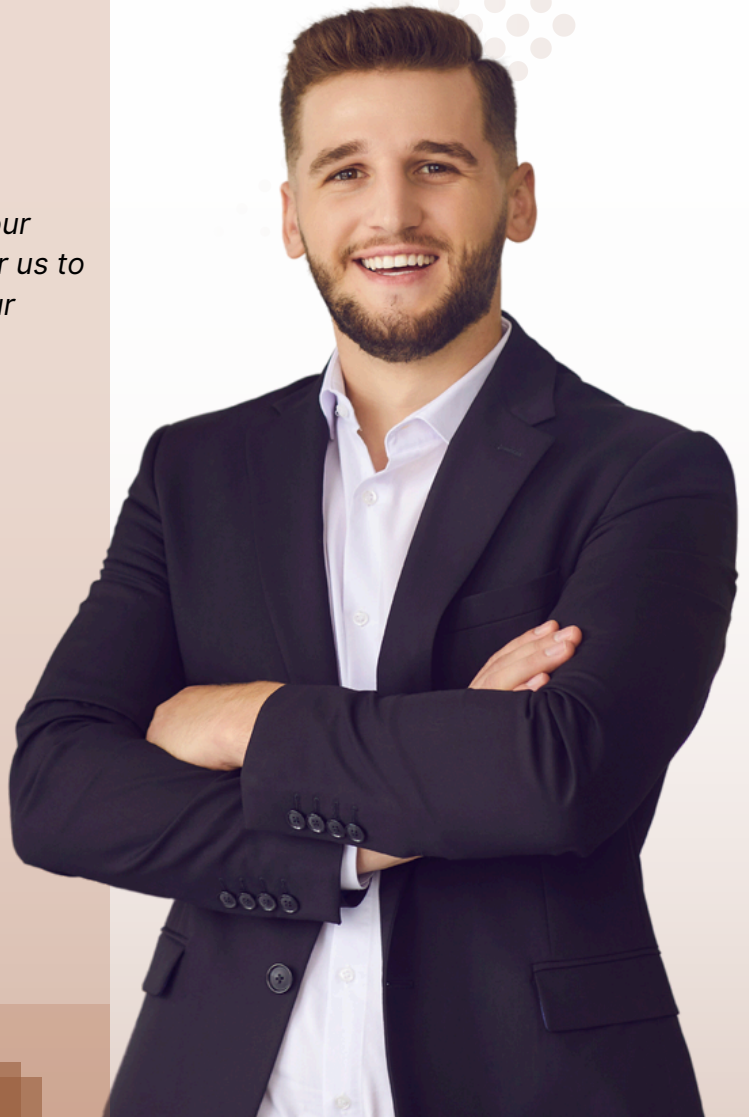
Email: busisiwe@yswnsa.org.za
marketing@yswnsa.org.za
aubrey@yswnsa.org.za

"You automatically lose the chances you don't take."

To Social Work Entrepreneurs, **Event creators, Social Work tiktokers and Podcasters**, and **Authors**;

YSWN Platform extends to all Southern African Countries,

Advertising with us will maximize your reach to consumers, not only from South Africa, but from all walks of life in different Southern African Communities in SADC!



Talk to our Marketing Team
marketing@yswnsa.org.za

@YSWNSA

YOUNG SOCIAL WORKERS NETWORK SA

**FOLLOW US ON OUR
SOCIALS**



@YWNsApodcats



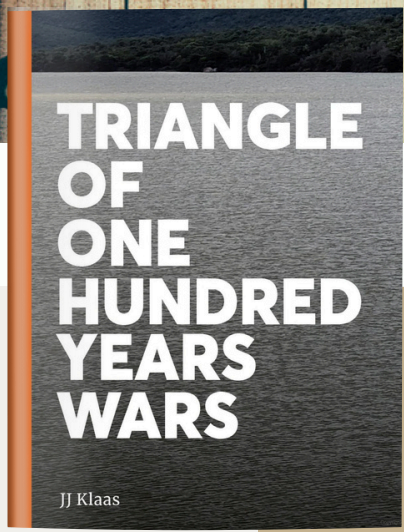
www.yswnsa.org.za

SOCIAL WORK BOOK

CLUB

THIS EDITION'S REVIEW

Book Review



"Reading is essential for those who seek to rise above the ordinary"

- Jim Rohn

Triangle of One Hundred Years Wars

Dr. By JJ Klass

THIS EDITION'S REVIEW



Busisiwe Madikizela-theu



@Busisiwe Madikizela-theu



Busisiwe Madikizela-theu

Want us to review your Book?

Send us an email;
busisiwe@yswnsa.org.za
editorial@yswnsa.org.za

 YSWN PRESS



@The latest cartoon from Fran

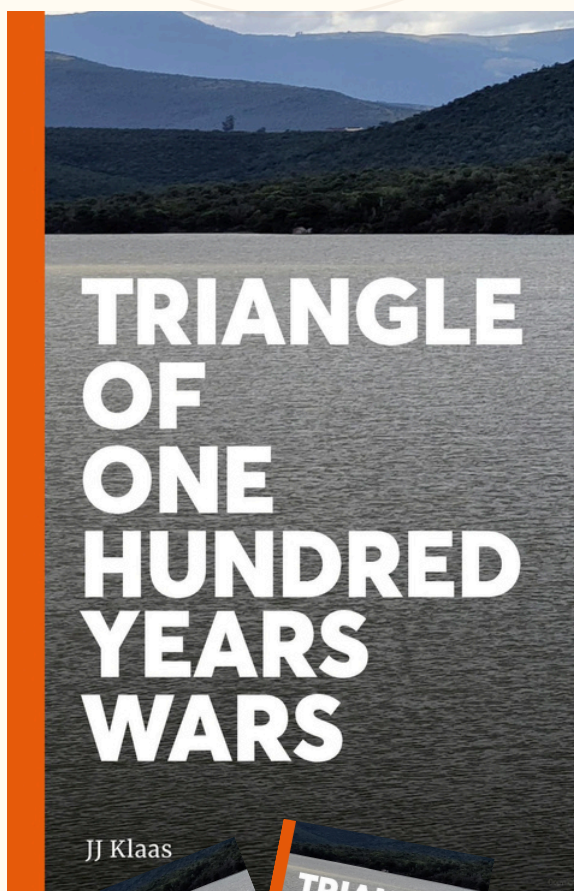
Book Review

REVIEW BY BUSISIWE MADIKIZELA-THEU

Triangle of One Hundred Years Wars Dr. By JJ Klaas

Dr. JJ Klaas's "Triangle of the One Hundred Years Wars" offers profound implications for social work and society, particularly in the context of addressing historical trauma and fostering social justice. By meticulously examining the impact of European colonialism on the amaXhosa people, Klaas highlights the enduring consequences of systemic oppression and the manipulation of cultural narratives. For social workers, this text serves as a vital reminder of the importance of culturally informed practice, encouraging professionals to engage with historical contexts and recognize the resilience and leadership within indigenous communities.

The book's challenge to Eurocentric and patriarchal perspectives urges social workers to critically reflect on their own practices and biases, promoting a more inclusive and equitable approach to social care. Klaas's work underscores the necessity of empowering marginalized communities to reclaim their histories and identities, fostering a collective movement towards healing and reconciliation. In broader societal terms, the book calls for a re-examination of power dynamics and historical narratives, advocating for a future where the legacies of colonialism and patriarchy are confronted and dismantled, paving the way for true social equity.🌍



Triangle of One Hundred Years Wars Dr. By JJ Klaas

STYLE
EDIT.
AUTUMN.24

MARKHAM
FINE TAILORING
SINCE 1972





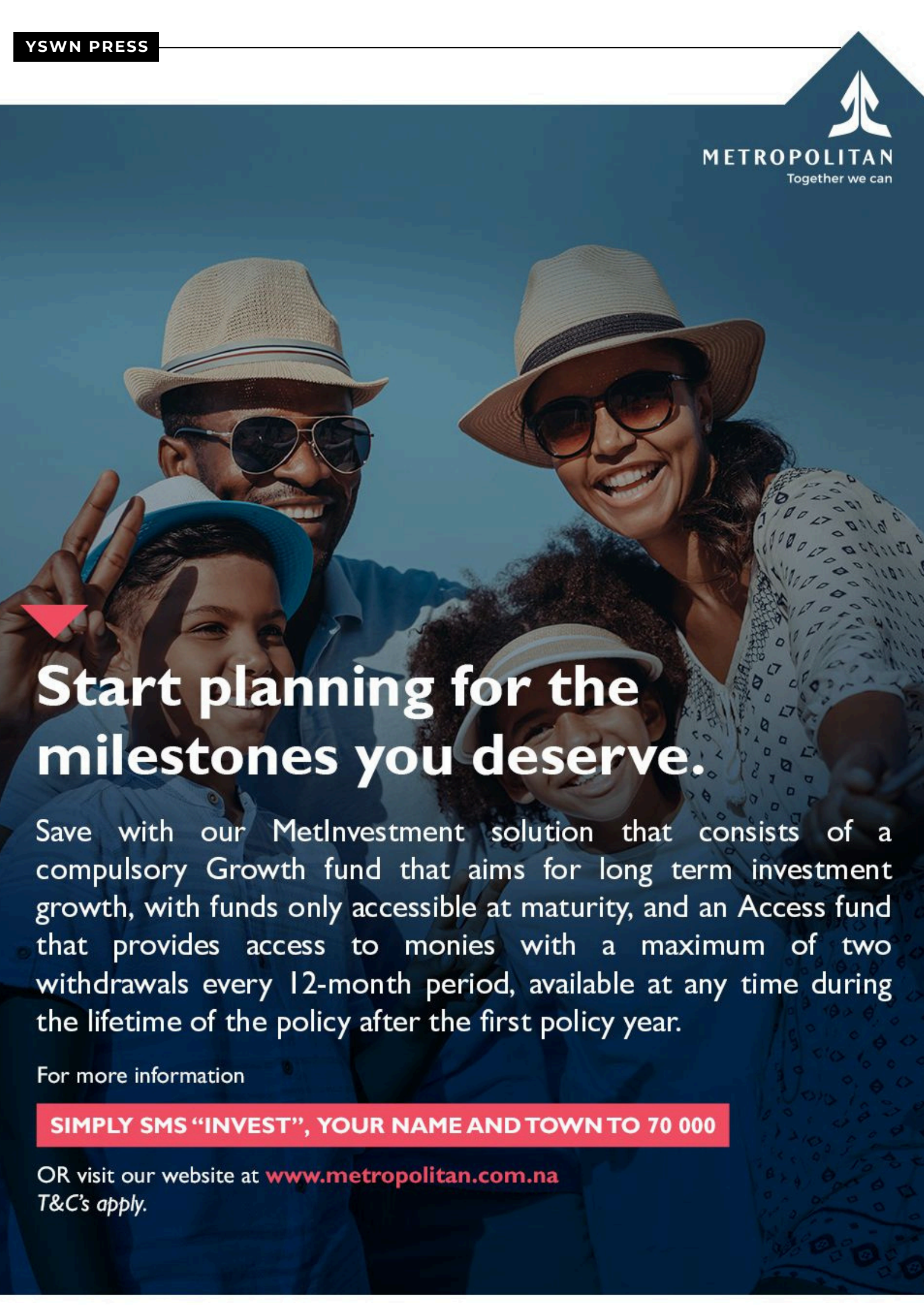
SA NATIONAL ELECTIONS

Beyond the Ballot

General elections were held in South Africa on 29 May 2024 to elect a new National Assembly as well as the provincial legislature in each of the nine provinces. This was the 7th general election held under the conditions of universal adult suffrage since the end of the apartheid era in 1994.

Get yourself a Free Copy





Start planning for the milestones you deserve.

Save with our MetInvestment solution that consists of a compulsory Growth fund that aims for long term investment growth, with funds only accessible at maturity, and an Access fund that provides access to monies with a maximum of two withdrawals every 12-month period, available at any time during the lifetime of the policy after the first policy year.

For more information

SIMPLY SMS "INVEST", YOUR NAME AND TOWN TO 70 000

OR visit our website at www.metropolitan.com.na

T&C's apply.